

Digital Infinity™ Series

Welding Safety and Health 

Auto-Darkening Welding Helmets

Quick Specs

Viewing Area
86,45 sq. cm

Operating Modes and Shades
Weld (8 – 13), Cut (5 – 8), Grind (3), X-Mode™ (8 – 13)

Light State 3.0

Sensors 4

Optical Clarity
1/1/1/2

TIG Rating

Switching Speed

Weight

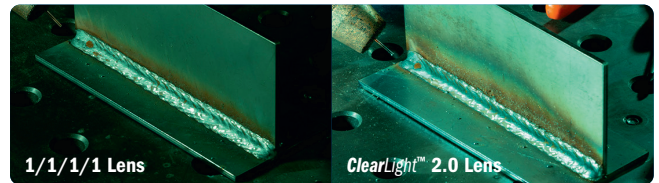
Certifications

5 amps and below

1/25,000 second

606 g

ANSI Z87.1+, CSA, CE



ClearLight™ 2.0 Lens Technology provides advanced high-definition optics for the most realistic view that's clearer and brighter – before, during and after every weld.

InfoTrack™ 2.0 tracks and displays arc time and arc count.

AutoSense™ reduces issues related to setting helmet sensitivity by allowing the welder to push and hold the AutoSense button to automatically set the helmet sensitivity for their environment.

Four arc sensors and four modes: weld, cut, grind and X-Mode. X-Mode electromagnetically senses the weld to reduce sunlight interference and continuously detects the arc even if sensors are blocked.

Digital controls easily allow welder to make precise lens adjustments to shade, delay and sensitivity.



Memory function for easy switching between two preset customized memory settings.

Half-shade settings for precise lens adjustment.

NEW! Legacy headgear with comfort cushion designed for unsurpassed comfort and stability for all-day wearability.



Optional helmet lighting accessory kit includes two lights (one for each side) and all required mounting hardware.



Auto-darkening lens is warranted for four years.



International Headquarters
Miller Electric Mfg. LLC

An ITW Welding Company
1635 W. Spencer Street
Appleton, WI 54914 USA

MillerWeldsEurope.com

Miller Europe

Orbitalum Tools GmbH
Josef Schuettler Str. 17
78224 Singen, Germany
Tel.: +49 7731 792 400
sales.MILLER@ITWwelding.com

ITW WELDING Sales Office UK

77 New Court Way
Ormskirk, Lancashire L39 2YT
United Kingdom
Tel.: +44 1695 585 910
sales.UK@ITWwelding.com

Design Options



Black Ops™
289715



Stars and Stripes™
288420



Black
289714

Ordering Information

Auto-Darkening Welding Helmets	Stock No.	Description	Qty.	Price
Digital Infinity™ Series		See above		
Consumables				
Battery, CR2450	217043			
Cover Lens, Front	271320	5 pack		
Cover Lens, Inside	271319	5 pack		
Replacement Parts/Accessories				
ClearLight™ 2.0 Auto-Darkening Lens	289753			
Legacy Headgear (included)	290460			
Headgear (Gen. 3.5)	284218			
Helmet Bib	253882			
Hard Hat Adapter, Slotted	259637	Compatible with most slotted hard hats		
Hard Hat Adapter, Universal	222003	Compatible with MSA, Fibre Metal and most hard hats		
Helmet Hook	251018			
Helmet Lighting Accessory Kit	282013			
Magnifying Lens Adapter	271328			
Magnifying Lens	212235	0.75		
	212236	1.00		
	212237	1.25		
	212238	1.50		
	212239	1.75		
	212240	2.00		
	212241	2.25		
	212242	2.50		

Date:

Total Quoted Price:

Miller® recommends *Elega* consumables

Distributed by:

